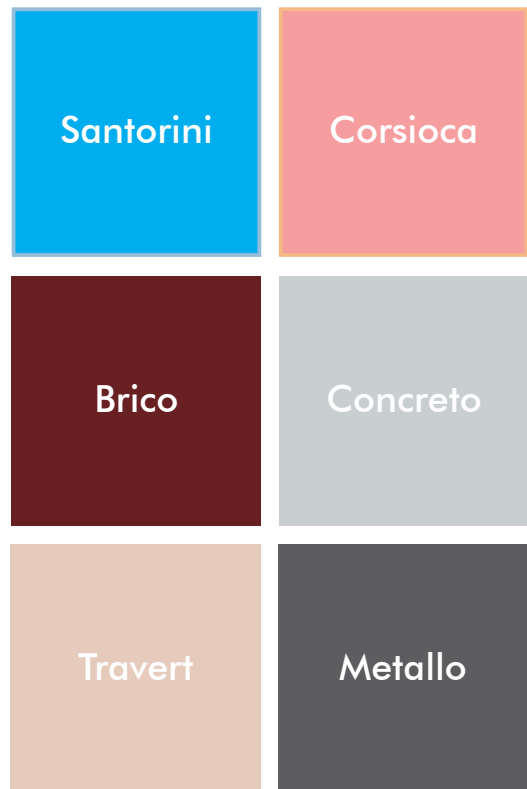


# Stonelite





Exterior	Balcony	Facade	Landscape	Bungalow	Terrace
Interior	Walls	Floor	Ceiling	Bathroom	Furniture





# SANTORINI





## Stonelite Santorini

Inspired from Santorini Islands in Greece, Santorini is our base finish. Simple and elegant, the finish brings a whole new dimension to simple white walls. The natural lime white color of the material with an array of texture finishes makes for a classy and minimalistic surface.



NATEN LT



FINEO



LISCO



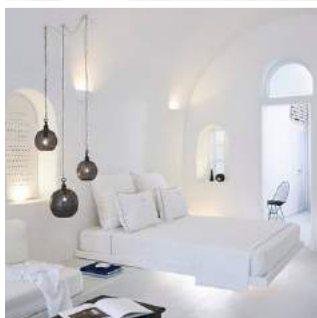
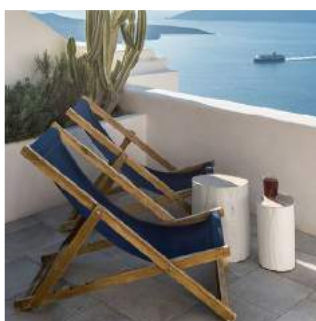
WAVE



LIANO



VENETA









## Stonelite Corsioca

Corsioca is our coloured stone finish. It can be made in any colour the designer wants. Corsioca finish has a natural dual tone which is reminiscent of the wall finishes found in European towns and villas.



NATEN LT



FINEO



LISCO



WAVE



LIANO



VENETA





**CONCRETO**





# Stonelite Concreto

Stonelite Concreto does not just look like actual concrete but also feels like it due to the various processes applied on it to achieve different textures and finishes of concrete. With the strength of concrete and the flexibility of applying it on any surface, Stonelite Concreto is like concrete but better.



CEM X



GEM X



LISCO



WAVE



LIANO



WASH



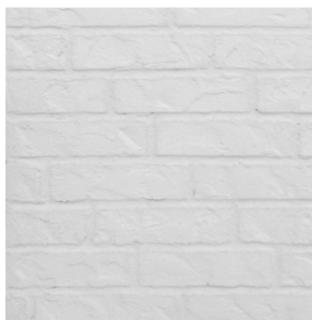






## Stonelite Brico

Stonelite Brico is one of our most popular finishes. Get the aesthetics of brick without its shortcomings. Stonelite Brico can be applied on any surface including curved walls. The brick size and texture can also be adjusted as per the designer's requirements. It is by far the most realistic and design friendly brick finish.



ICY WHITE



KERRAMOS



MOROCCAN



COLONNIAL



CASTELLO



ANTIECO







# TRAVERT

## Stonelite Travert

Elegance is the key defining feature of the finish. With no joints and a matte finish, Travert is one of the best finishes possible through stone-lite. Stonelite Travert is most frequently used in building facades and lobbies to give the design the extra touch of class it deserves.



BLANCON



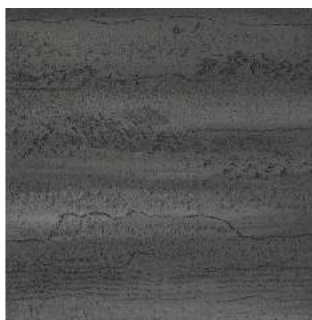
SILCO



LAVANTO



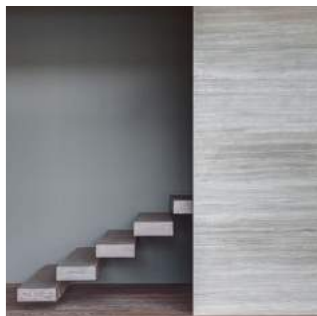
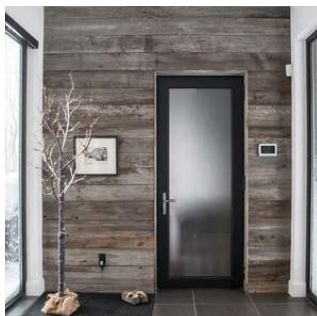
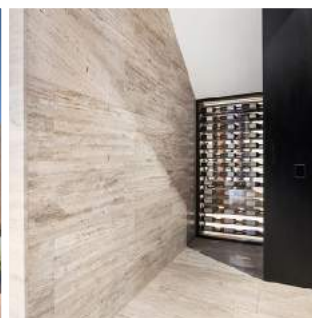
GREO



NOIRR



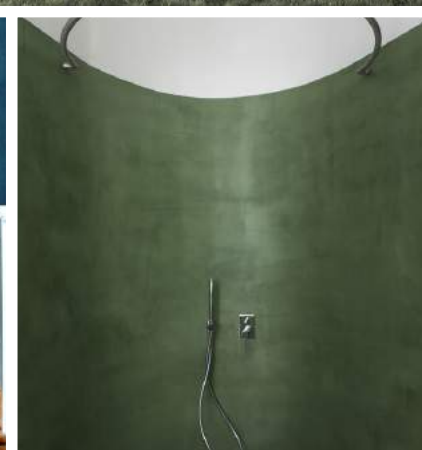
PERTO







# METALLO





## Stonelite Metallo

Our newest series, Stonelite Metallo is challenging the usual aesthetics of concrete, brick and plain plaster walls. With Stonelite Metallo, get a seamless metallic look, which not only looks trendy but is also longlasting.



Duo



Cucoo



LIANO



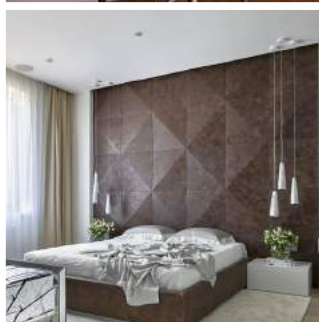
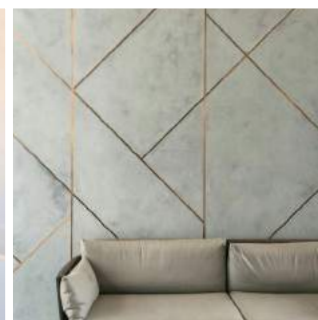
INAA



PINTAZ



ANTIECO

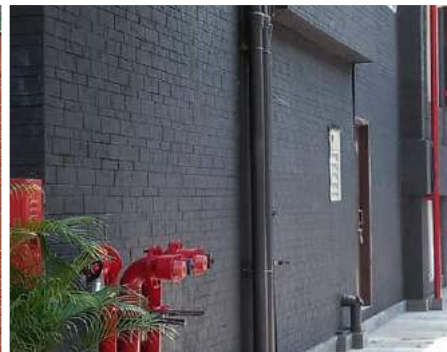




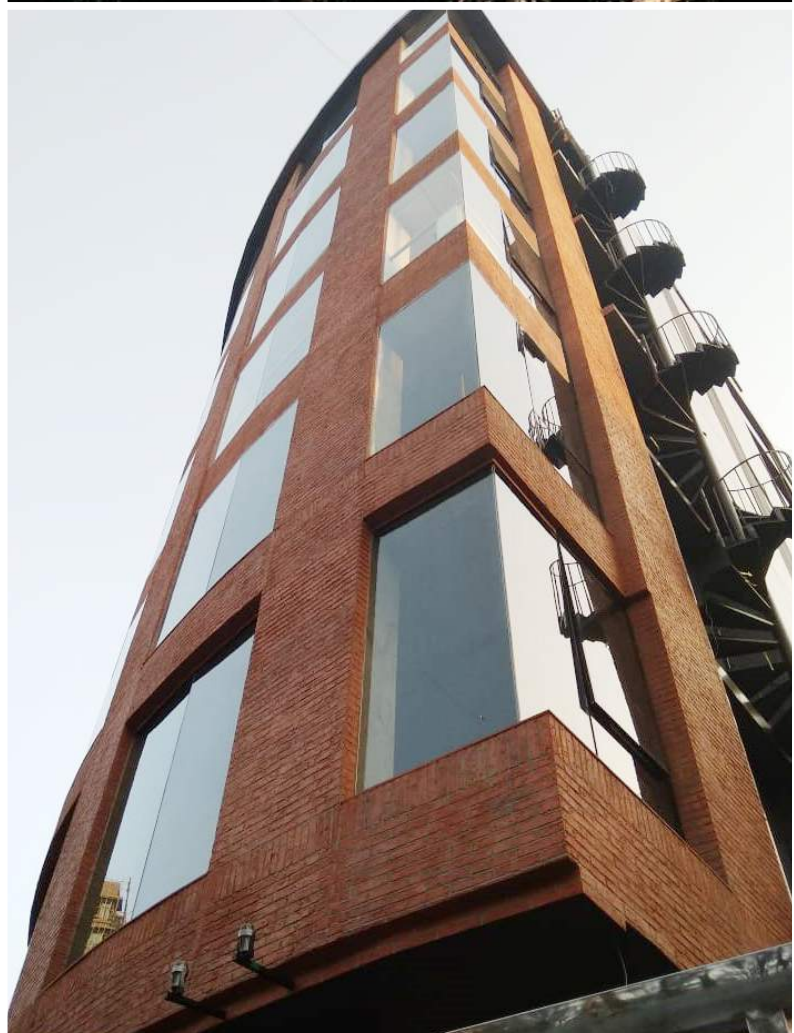


Balcony  
Facade  
Compound Wall  
Bungalow  
Terrace

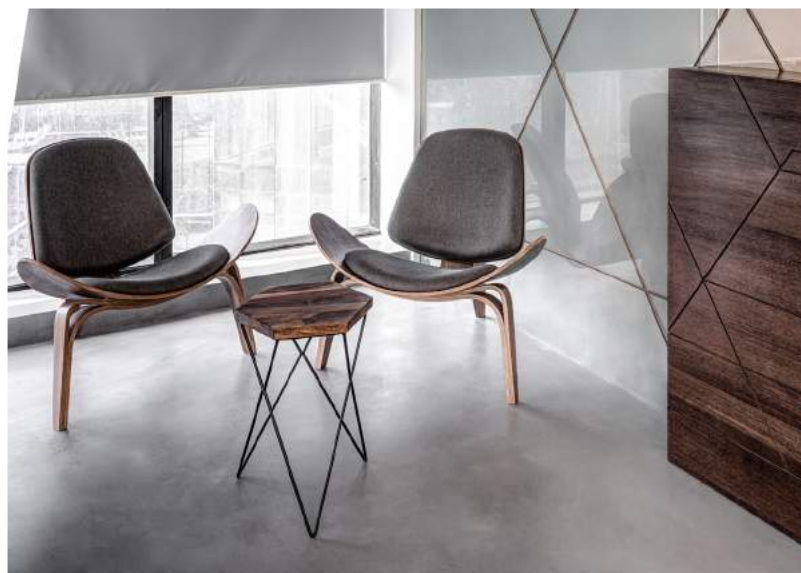
# exterior projects











Walls  
Floor  
Ceiling  
Bathroom  
Furniture

# interior projects



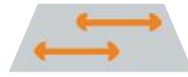


# why stonelite?



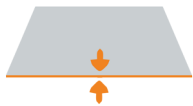
## Water Resistant

Stonelite is resistant to water. It absorbs water but to a permissible extent. It can become water repellent with the addition of a stone coat.



## Mouldable/Flexible

Stonelite is flexible and mouldable like clay. In essence, stonelite is stone clay which acquires the strength of concrete once it dries.



## 1mm Thick STONE

Stonelite is 1mm thick stone. Its thickness can be increased from 1 mm to 500mm and more.



## Odourless and safe

Stonelite has no distinctive odour or smell. It has no harmful chemicals in its constituents.



## Eco-friendly, Green Product

Stonelite is an eco-friendly material and is not made up of any harmful chemicals.



## UV Resistant

Stonelite can fade in colour just like how granite, marble or stone get faded in the sun. However, it can be protected by stone coat, PU coat exterior.



## Light-weight

Stonelite is an extremely light-weight material. Its weight if considering dry powder itself, not including water, 0.2KG~0.4KG per square feet.



## Crack Resistant

Stonelite is generally resistant to cracking as long as the backing material is levelled and there are no vibrations.



## Quick Application

Stonelite can be applied quickly on a levelled surface in a few hours. It dries out in 24 hours and acquires the strength of concrete.



## Temperature Regulation

Stonelite being actual crushed stone powder displays the property of stone by regulating the temperature of the space it has been applied in.



## Dust Resistant

Stonelite is a self-breathing material, which means it allows the passage of air through its pores. This doesn't allow any dust to settle onto the surface of stonelite.



## Fungi Resistant

Stonelite is resistant to fungi and other parasites that grow on wall surfaces. No dark patches or moulds are formed on the surface of the finish overtime.



## Fire Resistant

Stonelite conforms to fire resistant standards as per UL94V0.



## Durable and Strong

Stonelite, once it dries, inherits the strength of concrete. It has the life of stone, that is, it will last at least 12-15 years.



## Self-Adhesive

Stonelite is self-adhesive, that is it doesn't require a separate adhesive to be applied for adhesion.



## Wind Resistant

Stonelite is resistant to strong windspeeds and can be applied on building that are higher than 50 storeys or in bungalows located in high altitudes as well.

# what is stonelite?

Stonelite is one mm thick stone paste which can be applied on any surface. It can be moulded to look like brick, concrete, wood, stone or any other finish the customer desires, using unique design processes. This surface coating material has been developed from 1000 year old Moroccan technology. It has been developed in such a way that all the shortcomings of its predecessor have been improved upon to make the ultimate product.



## Step 1

Ensure that the backing surface is levelled and water based primer has been applied. Then Stonelite granules are mixed with water using a hand mixer by our skilled labourers.



## Step 2

The labourers start designing the wall and apply Stonelite as the base material using a trowel. This provides a foundation on which our skilled labourers can then design.



## Step 3

The final finishing touches are applied along with shading and polishing as per the design requirements. Marble Polishing and stone coat is done as final touches.



# how is stonelite applied?



# where can stonelite be applied?

## materials

Stonelite's self adhesive properties allow it to be applied on almost all materials including metal, glass, etc.



Wood



Metal



Glass



Ceramic



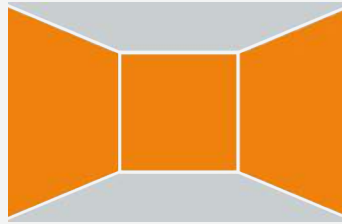
Brick/Plaster



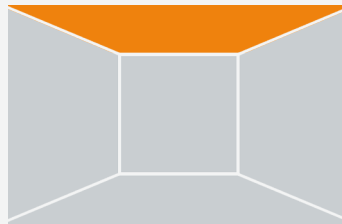
Fabric

## interior

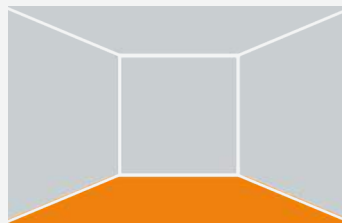
Stonelite is flexible enough to be applied on multiple surfaces in interiors as well as exteriors. Its self-adhesive properties allow it to be stuck on walls, floors and even ceilings. It provides a unique solution for bathrooms and even furniture surfaces such as shutters and table tops.



Walls



Ceiling



Flooring



Bathrooms



Furniture / Doors

## exterior

In exteriors stonelite offers a durable and designer solution to building facades making them more resistant to climate and natural factors. It can also be applied in villas, making yearly maintenance costs of the villa negligible when it comes to the exterior facades. Stonelite is also an alternative solution in balconies as it is weather and water resistant.



Building Facade



Bungalow



Balcony



Terrace



Compound Wall

# Market Comparison

SN	PARTICULARS	PAINT TEXTURE	CEMENT TEXTURE	STONE TEXTURE
1	Base Material	Paint	Cement	Stone
2	Life / Durability	2/3 Years	3/5 Years	12/15 Years
3	Strength	No Strength	No Strength	Concrete Strength
4	Natural Whiteness	No	No	Yes
5	Different Characters - Design In Product	No	No	Yes (Any)
6	Thickness Of The Product ( Maximum)	0.1 mm	12mm	1 mm - 150mm+
7	Fire Resistance	Yes	Yes	Yes
8	Marble Polishing On Material	No	No	Yes
9	Dust Resistance	No	No	Yes
10	Development Of Cracks - (2-3 Years)	Yes	Yes	No
11	Temperature Resistance	No	No	Yes
12	Water Resistance	No	No	Yes
13	Climate Resistance ( Fungus / Black Mark)	Yes	Yes	No
14	Green Product ( Eco Friendly )	No	No	Yes
15	Application Surfaces	Wall/Ceiling/Furniture	Floor / Wall	Wall/Floor/Ceiling/Furniture
16	Write Up / Stencil / Text on Material	No	No	Yes
17	Application Speed	7/8 Days	3/4 Days	1/2 Days
18	Harmful Smell	Yes	Yes	No
19	Exterior Material	Yes	Yes	Yes
	Prevailing Market Price	Rs. 75 – 150	Rs. 150 – 350	Rs. 250 – 450
Stone life can be applied on any surface like - Wood, Stone, Tiles, Plaster, Rcc, Glass, Metal, Foam, Acrylic, Plastic, Cloth, Etc...				
Stone life can be applied on existing bathroom wall & existing floor directly (no need to remove existing surface finish)				

stonelite compared to other products



+91 9223 494 385 / 86  
022 2387 4381 / 82  
info@la-neesh.com

18/20 B, LA-NEESH, Seervai Building,  
Naushir Bharucha Road, Grant Road (W),  
Tardeo. Mumbai - 400007.



[www.la-neesh.com](http://www.la-neesh.com)